



REPUBLIC OF KENYA
MINISTRY OF ENVIRONMENT AND FORESTRY
KENYA METEOROLOGICAL DEPARTMENT

Dagoretti Comer, Ngong Road, P. O. Box 30259, 00100 GPO, Nairobi, Kenya
Telephone: 254 (0) 20 3867880-7, **Fax:** 254 (0) 20 3876955/3877373/3867888,
E-mail: director@meteo.go.ke, info@meteo.go.ke **Website:** <http://www.meteo.go.ke>

REVIEW OF OCTOBER-NOVEMBER-DECEMBER (OND) 2018 RAINFALL SEASON
AND FORECAST FOR NOVEMBER- DECEMBER 2018

SUMMARY

October-November-December (OND) 2018 “Short Rains” Season Summary

The “Short Rains”, October to December (OND), season constitutes an important rainfall season in Kenya and more so in the Central and South-eastern regions. The Climate Outlook for the October-November-December (OND) 2018 “Short Rains” season indicated that much of the country was likely to experience above average rainfall. The distribution, both in time and space, was also expected to be good.

However, the rainfall distribution observed during the season up to 12th November 2018 has been generally poor over most places especially during the peak month of November. This has been as a result of the Intense Tropical Cyclone “Alcide” that developed in the Indian Ocean at the beginning of November and significantly reduced the moisture influx into the country. The onset of the OND 2018 seasonal rainfall, though timely, was not characterized by the usual heavy storms apart from few places in western Kenya and the Coastal strip.

Up to 12th of November 2018, Mombasa Met Station had the highest rainfall total of 286.1mm (100% of October-November-December (OND) Long-Term Mean (LTM)). Other stations that had recorded between 50 – 75 % of their OND LTMs include Lamu 74%, Mtwapa 72%, Kisumu 66%, Laikipia 59%, Malindi 58%, Msabaha 57%, Kakamega 51% and Eldoret (Kapsoya) 50%. Marsabit, Moyale, Kitale and Kisii recorded between 40 and 50 percent while the rest of the stations recorded less than 40% of their OND LTMs. Lodwar Meteorological Station reported no rainfall (0mm). The onset of Seasonal rains have so far been characterized by erratic (uneven) and significant cumulative deficits over much of Kenya apart from the coastal strip. For example, on 25th of October, 2018 Kinango Agricultural station reported 222.0mm. Other stations along the Coast that recorded significant rains are Kwale Veterinary Station 158.0mm, Vanga Fisheries station 103.5mm, and Lunga Lunga Primary School with 116.2mm.

Other stations within the country with significant rainfall (more than 75mm) were:

Station	October Rainfall Totals
Kaimosi Tea Factory Station	105.4mm
Kapenguria WRMA (AWS) Station	102.3mm
Busia Min. Water Station	145.5mm
Eldoret MCC Station	76.6mm
Chebororwa Farmer's T.C Station	102.9mm
Sabor Forest Station	97.2mm
Kakamega Hill School Station	208.0mm
Nabkoi Forest Station	101.3mm
Kapkenduiyo Secondary School Station	91.3mm
Chebisaas Girls High School Station	183.6mm
Turbo Forest Station	97.9mm
Cengalo Foerst Station	105.5mm
Komol Farm Station	93.6mm
Bungoma Water Supply Station	105.8mm
Kanduyi Agricultural Station	142.5mm
Eluuya Girls Station	205.6mm
Mukakula Farm Station	75.3mm
Butere Station	209.7mm
Tuthu Station	161.6mm

Table 1: October 2018 Rainfall Totals

**OCTOBER-NOVEMBER-DECEMBER
SEASON CLIMATOLOGY**

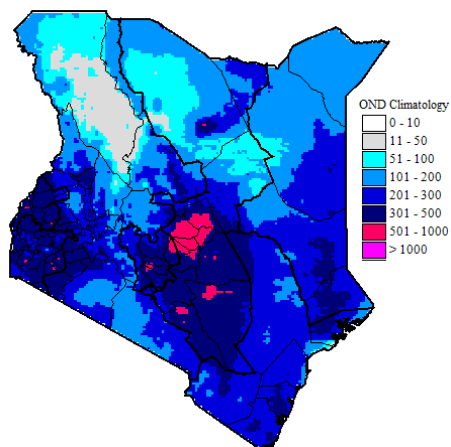


Figure 1a: October-November-December (OND) 2018 "Short Rains" Season Climatology

(OND) "SHORT RAINS"

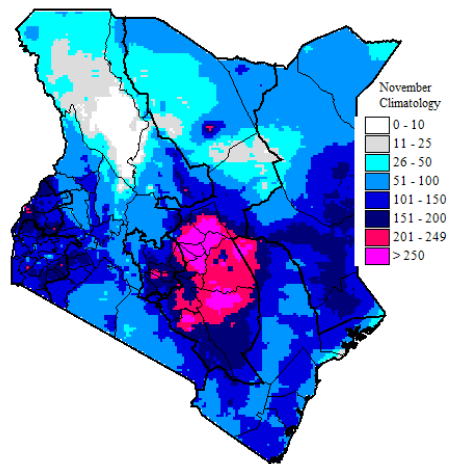


Figure 1b: November Climatology

NOVEMBER-DECEMBER FORECAST SUMMARY

The outlook for November-December 2018 indicated that several parts of the country are expected to receive near-normal to above-normal (enhanced) rainfall. Some parts of Northern Kenya (Mandera and Northern parts of Wajir) were, however, likely to experience near-average rainfall. Despite the prolonged dry spells that have been observed so far, substantial amounts of rainfall are expected towards the end of November and will continue into December. The expected intense rainfall is still likely to cause flooding in isolated areas in the country.

KEY OF SCIENTIFIC WORDS USED

<i>Rainfall categories</i>	
<i>Range</i>	<i>Category</i>
<5 mm	Light
5 - 20mm	Moderate
20 - 50mm	Heavy
>50mm	Very heavy

<i>Rainfall coverage</i>	
<i>Term</i>	<i>Meaning</i>
Most Places	Between 66% and 100%
Several Places	Between 33% and 66%
Few Places	Below 33%

N.B: This forecast should be used in conjunction with the daily (24-hour) and weekly forecast issued by this Department.

Stella Aura, MBS

DIRECTOR OF KENYA METEOROLOGICAL DEPARTMENT